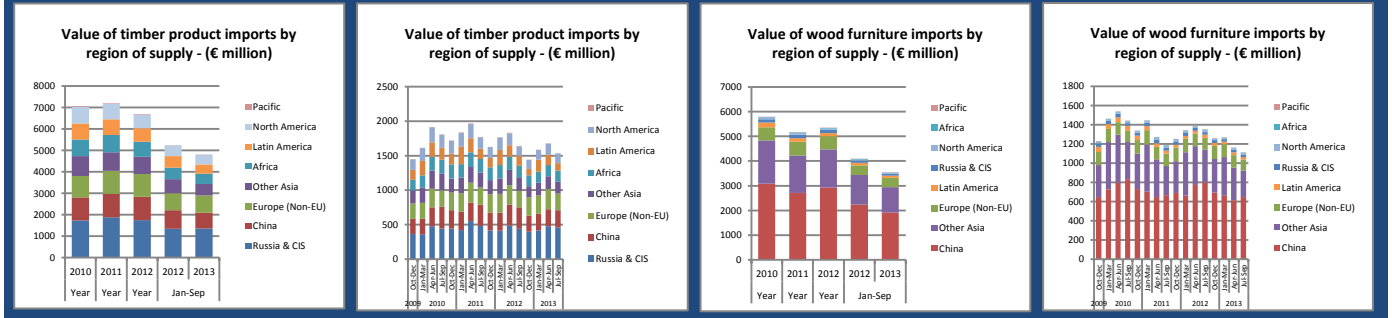


## EU-27 (trade with non-EU countries)



Supply region/country	Value (€ million)					Quantity (see unit)					Quarterly trend
	2011	2012	2013	% chge	2011	2012	2013	% chge			
<b>Softwood logs (1000 m3)</b>											
<b>TOTAL</b>	<b>322.4</b>	<b>335.3</b>	<b>254.7</b>	<b>305.6</b>	<b>20.0</b>	<b>5029.7</b>	<b>5249.3</b>	<b>3927.1</b>	<b>5295.5</b>	<b>34.8</b>	
NORWAY	72.6	118.7	88.3	122.6	38.9	1048.1	1881.1	1397.5	2109.3	50.9	
UKRAINE	58.7	67.0	49.9	56.3	12.7	963.0	1062.5	791.7	864.6	9.2	
RUSSIA	76.5	62.0	50.9	60.1	18.0	1132.1	826.9	664.3	1026.4	54.5	
BELARUS	44.9	26.9	19.5	25.1	28.9	1064.5	724.7	503.7	773.4	53.6	
SWITZERLAND	63.0	55.1	41.8	36.8	-12.0	738.1	684.4	518.6	461.2	-11.1	
BOSNIA-HERZ.	3.4	2.2	1.6	2.4	46.6	47.0	28.2	21.1	27.9	32.6	
CROATIA	0.9	1.6	1.2	1.1	-12.3	14.8	24.9	18.7	21.2	13.0	
<b>Tropical hardwood logs (1000 m3)</b>											
<b>TOTAL</b>	<b>120.1</b>	<b>87.2</b>	<b>69.0</b>	<b>57.8</b>	<b>-16.2</b>	<b>293.3</b>	<b>206.2</b>	<b>166.6</b>	<b>130.6</b>	<b>-21.6</b>	
CONGO (DEM. REP.)	30.7	22.2	18.0	15.2	-15.3	77.5	56.7	45.1	38.8	-14.0	
CONGO	27.6	21.8	16.6	15.4	-7.1	65.4	50.8	38.9	35.6	-8.3	
CAMEROON	25.8	15.0	12.5	7.4	-40.8	68.5	39.5	33.6	19.6	-41.7	
LIBERIA	5.4	5.3	4.7	2.4	-49.8	23.1	20.5	19.1	9.2	-51.8	
CEN. AFR. REP.	8.9	7.6	5.7	3.9	-30.5	21.9	17.7	13.6	9.5	-29.9	
GABON	3.9	3.0	1.7	1.4	-17.1	8.7	6.2	4.1	2.9	-29.6	
EQUAT. GUINEA	4.6	1.3	1.2	1.2	5.0	14.0	4.0	3.5	5.9	65.8	
<b>Other hardwood logs (1000 m3)</b>											
<b>TOTAL</b>	<b>409.5</b>	<b>369.9</b>	<b>288.0</b>	<b>304.8</b>	<b>5.8</b>	<b>6050.0</b>	<b>6267.7</b>	<b>4721.5</b>	<b>5235.7</b>	<b>10.9</b>	
RUSSIA	162.8	178.6	135.7	176.8	30.3	2880.6	3386.3	2479.2	3489.8	40.8	
BELARUS	49.9	40.3	31.0	26.2	-15.2	1413.2	1561.5	1200.8	916.6	-23.7	
CROATIA	48.2	37.2	29.0	23.9	-17.7	598.1	466.6	374.7	238.0	-36.5	
UKRAINE	34.1	25.2	19.3	17.2	-11.0	597.5	426.1	326.1	297.6	-8.7	
SWITZERLAND	20.7	14.4	11.7	10.6	-9.6	226.1	157.3	123.2	107.9	-12.4	
BOSNIA-HERZ.	8.3	7.1	5.7	2.3	-59.0	112.8	101.0	85.1	29.2	-65.7	
USA	55.2	45.8	39.0	29.4	-24.5	104.7	80.8	67.7	57.8	-14.7	
<b>Softwood sawn (1000 m3)</b>											
<b>TOTAL</b>	<b>1056.8</b>	<b>970.9</b>	<b>758.4</b>	<b>709.2</b>	<b>-6.5</b>	<b>5096.5</b>	<b>4701.9</b>	<b>3649.3</b>	<b>3486.5</b>	<b>-4.5</b>	
RUSSIA	598.9	547.1	430.4	387.7	-9.9	2876.5	2606.7	2041.1	1901.4	-6.8	
UKRAINE	78.7	70.3	52.8	57.2	8.3	656.2	576.7	433.9	458.4	5.6	
BELARUS	61.1	65.2	50.3	51.8	2.8	472.4	518.5	403.5	400.1	-0.8	
NORWAY	84.7	87.0	68.5	72.6	6.0	403.6	417.2	328.2	334.6	1.9	
CANADA	117.2	103.6	82.2	75.7	-7.9	241.7	197.3	157.4	127.2	-19.2	
SWITZERLAND	32.3	29.7	21.7	21.4	-1.7	172.3	157.6	114.6	111.7	-2.5	
USA	30.2	22.3	18.3	14.7	-19.5	72.6	52.8	42.5	34.6	-18.4	
<b>Tropical hardwood sawn (1000 m3)</b>											
<b>TOTAL</b>	<b>772.0</b>	<b>696.5</b>	<b>548.4</b>	<b>457.2</b>	<b>-16.6</b>	<b>1119.7</b>	<b>971.3</b>	<b>763.1</b>	<b>676.9</b>	<b>-11.3</b>	
CAMEROON	223.8	223.2	174.8	143.2	-18.0	367.5	357.6	280.1	236.3	-15.7	
MALAYSIA	183.2	152.0	118.2	96.5	-18.3	233.4	171.6	131.7	125.3	-4.9	
BRAZIL	109.7	84.9	71.3	43.2	-39.5	153.2	114.3	94.6	66.4	-29.8	
GABON	43.9	44.3	34.7	35.5	2.3	80.3	83.7	65.4	69.0	5.4	
IVORY COAST	52.3	47.9	38.7	30.3	-21.6	83.1	80.7	65.0	54.6	-16.0	
GHANA	24.1	17.3	13.2	12.1	-7.8	40.7	33.6	25.5	22.5	-11.4	
CONGO	18.5	16.8	13.0	19.7	51.8	28.0	26.0	20.3	29.4	45.1	
<b>Other hardwood sawn (1000 m3)</b>											
<b>TOTAL</b>	<b>654.7</b>	<b>593.7</b>	<b>450.7</b>	<b>416.1</b>	<b>-7.7</b>	<b>1482.6</b>	<b>1319.5</b>	<b>1001.6</b>	<b>910.3</b>	<b>-9.1</b>	
USA	292.9	254.5	195.5	185.1	-5.3	469.0	378.3	288.0	284.6	-1.2	
CROATIA	119.0	109.2	81.5	69.9	-14.3	338.7	305.4	228.7	NA	NA	
UKRAINE	74.4	70.8	53.0	48.2	-9.0	269.8	237.4	181.4	158.5	-12.6	
BOSNIA-HERZ.	31.1	30.5	22.5	20.6	-8.4	77.7	75.8	56.3	49.1	-12.8	
BELARUS	8.1	9.5	7.4	5.7	-22.1	58.7	75.7	59.4	43.7	-26.4	
SERBIA	21.9	22.5	16.7	17.1	2.0	66.2	69.6	51.4	50.3	-2.2	
RUSSIA	13.2	8.6	7.2	5.6	-22.4	60.5	42.9	35.7	27.9	-21.6	

## EU-27 (trade with non-EU countries)

Supply region/country	Value (€ million)					Quantity (see unit)					Quarterly trend
	Year		Jan-Sep			Year		Jan-Sep			
	2011	2012	2012	2013	% chge	2011	2012	2012	2013	% chge	
<b>Softwood mouldings (1000 m3)</b>											
TOTAL	40.5	31.9	25.8	22.9	-11.1	65.4	52.6	42.5	39.8	-6.4	
RUSSIA	7.5	7.5	6.4	5.4	-15.7	19.0	18.9	16.1	13.6	-15.5	
BELARUS	3.7	2.6	2.1	2.2	1.8	12.6	10.0	7.9	8.5	7.7	
CANADA	9.1	6.3	5.2	4.9	-4.5	7.2	5.2	4.3	4.5	4.8	
UKRAINE	2.2	2.0	1.5	0.3	-80.4	4.2	3.7	2.9	0.7	-77.1	
CHINA	5.6	3.1	2.5	2.1	-16.9	5.6	2.7	2.1	1.8	-16.5	
NEW ZEALAND	2.3	1.8	1.7	1.1	-34.8	3.0	2.1	1.9	1.3	-34.5	
BRAZIL	2.5	1.3	1.1	2.2	100.5	3.6	1.9	1.6	3.5	126.4	
<b>Hardwood mouldings (1000 m3)</b>											
TOTAL	351.7	322.6	274.3	201.7	-26.5	361.4	290.0	247.1	193.6	-21.7	
BRAZIL	110.1	86.6	77.5	44.8	-42.2	124.7	91.0	81.1	51.8	-36.1	
INDONESIA	112.2	93.2	83.1	56.7	-31.7	110.4	78.2	69.8	57.1	-18.2	
CHINA	39.8	51.1	40.5	32.6	-19.4	34.8	38.4	29.4	26.8	-8.9	
MALAYSIA	26.0	20.7	17.1	12.6	-26.6	23.9	16.3	13.6	9.2	-32.3	
BOLIVIA	6.8	6.9	5.8	4.7	-19.3	8.8	7.3	6.3	5.0	-20.0	
IVORY COAST	2.5	3.9	3.2	3.5	10.1	3.2	5.2	4.2	4.7	9.9	
CAMEROON	2.8	3.6	3.2	1.7	-47.6	3.4	5.1	4.5	2.6	-41.6	
<b>Softwood veneer (1000 m3)</b>											
TOTAL	24.8	21.5	16.7	12.8	-23.3	24.5	15.0	11.8	9.2	-22.4	
INDONESIA	10.6	8.5	6.6	5.7	-13.0	6.2	4.4	3.5	3.3	-6.1	
CHILE	1.1	1.6	1.3	1.1	-15.0	5.4	3.2	2.5	2.1	-14.6	
CHINA	5.0	5.2	4.0	2.3	-43.6	3.2	2.6	2.1	1.2	-44.3	
BRAZIL	1.1	0.5	0.4	0.3	-5.9	3.2	1.0	0.8	0.7	-10.7	
USA	2.5	1.7	1.4	1.1	-25.5	1.5	1.0	0.8	0.6	-29.4	
RUSSIA	0.7	0.7	0.6	0.6	10.2	1.3	0.5	0.4	0.4	3.1	
MALAYSIA	0.5	0.2	0.2	0.0	-100.0	1.0	0.5	0.5	0.0	-100.0	
<b>Tropical hardwood veneer (1000 m3)</b>											
TOTAL	175.1	153.9	118.8	106.4	-10.4	302.5	257.5	201.4	180.8	-10.2	
GABON	80.2	61.7	49.0	42.2	-13.8	169.3	127.9	102.4	89.1	-13.0	
IVORY COAST	31.2	32.5	24.6	21.9	-11.0	60.2	61.9	47.2	42.7	-9.5	
CAMEROON	27.0	22.3	16.9	16.3	-3.7	30.8	26.1	20.1	21.5	7.3	
EQUAT.GUINEA	7.8	9.8	6.5	7.2	11.0	14.6	15.6	11.1	8.5	-23.5	
CONGO	7.6	6.6	5.0	5.6	11.6	13.8	11.8	8.8	10.1	13.9	
GHANA	6.3	7.5	6.3	3.1	-50.4	6.1	7.7	6.6	3.0	-54.3	
USA	1.4	1.8	1.3	1.2	-10.0	0.8	1.0	0.8	0.6	-21.0	
<b>Other hardwood veneer (1000 m3)</b>											
TOTAL	234.1	209.9	158.4	147.6	-6.8	198.0	180.2	136.0	127.9	-5.9	
UKRAINE	49.9	55.3	39.7	44.1	11.1	38.6	40.5	29.6	31.1	4.7	
USA	80.9	69.0	53.3	48.4	-9.2	48.2	39.7	30.5	29.2	-4.3	
RUSSIA	7.7	9.4	7.2	6.4	-10.6	25.2	29.7	22.5	20.4	-9.2	
SERBIA	4.4	4.4	3.2	3.2	-0.3	22.2	21.4	15.5	15.1	-2.6	
CROATIA	24.5	23.4	17.2	14.1	-18.0	14.3	13.9	10.1	9.2	-9.5	
TURKEY	7.9	9.3	7.1	5.9	-17.9	6.3	6.8	5.2	4.7	-8.5	
BOSNIA-HERZ.	4.9	4.6	3.3	3.0	-9.0	7.3	6.4	4.8	4.2	-13.0	
<b>Softwood plywood (1000 m3)</b>											
TOTAL	382.2	360.0	313.0	301.9	-3.5	1354.6	1192.4	1046.1	1008.3	-3.6	
BRAZIL	184.0	199.5	181.7	184.7	1.7	722.9	733.4	667.9	680.1	1.8	
CHILE	96.6	62.0	47.6	37.6	-21.0	316.1	185.7	143.6	104.2	-27.4	
CHINA	48.1	42.5	35.4	37.0	4.4	177.6	133.8	111.7	123.1	10.2	
RUSSIA	26.3	31.7	28.9	22.7	-21.4	75.4	92.5	85.3	60.6	-29.0	
USA	3.0	3.8	3.2	2.6	-18.9	7.6	9.3	8.0	6.4	-19.7	
MALAYSIA	4.4	4.0	3.4	2.8	-17.9	11.8	8.4	7.2	6.4	-11.2	
BOSNIA-HERZ.	5.1	4.4	3.2	3.2	-1.9	7.2	6.3	4.6	4.5	-2.2	
<b>Tropical hardwood plywood (1000 m3)</b>											
TOTAL	162.1	150.8	115.7	105.4	-8.9	351.3	289.4	223.4	214.1	-4.2	
CHINA	40.1	32.0	25.3	27.6	9.0	128.5	89.2	71.8	79.0	10.0	
INDONESIA	47.5	44.0	33.2	31.5	-4.9	89.1	72.1	53.8	54.2	0.8	
MALAYSIA	21.2	22.0	16.2	13.6	-16.0	48.1	44.0	32.4	29.7	-8.4	
GABON	28.4	27.7	22.0	20.0	-9.4	39.9	40.1	31.9	28.9	-9.2	
MOROCCO	11.7	13.0	10.0	5.4	-45.6	14.9	17.0	13.4	6.7	-49.8	
URUGUAY	1.5	2.1	1.9	0.2	-90.0	6.0	7.5	6.5	0.7	-89.1	
IVORY COAST	2.9	2.3	1.7	1.0	-42.0	6.3	4.5	3.3	2.0	-38.9	
<b>Other hardwood plywood (1000 m3)</b>											
TOTAL	732.3	721.9	560.3	536.1	-4.3	2031.2	1872.3	1460.1	1385.2	-5.1	
CHINA	261.9	290.0	229.9	203.9	-11.3	926.4	888.8	709.5	632.6	-10.8	
RUSSIA	322.0	290.7	220.3	234.4	6.4	730.9	650.2	491.1	517.0	5.3	
UKRAINE	32.9	35.4	26.4	26.4	0.1	76.5	84.6	62.7	61.7	-1.6	
MALAYSIA	34.6	37.6	31.8	25.0	-21.4	89.1	80.7	67.8	58.9	-13.1	
BELARUS	21.9	19.0	14.5	14.9	2.9	67.3	58.2	44.4	45.9	3.3	
URUGUAY	12.7	15.3	11.8	8.7	-26.6	54.6	57.7	45.2	32.2	-28.7	
INDONESIA	13.4	10.2	7.9	6.7	-14.8	22.1	14.6	11.6	9.9	-14.5	

## EU-27 (trade with non-EU countries)

Supply region/country	Value (€ million)					Quantity (see unit)					Quarterly trend	
	Year		Jan-Sep		% chge	Year		Jan-Sep		% chge		
	2011	2012	2012	2013		2011	2012	2012	2013			
<b>Densified wood (1000 m3)</b>												
TOTAL	30.1	26.7	23.0	16.4	-28.8	58.2	44.5	37.3	31.8	-14.8		
CHINA	11.1	13.5	12.6	7.6	-40.0	18.4	17.0	15.8	10.7	-31.9		
USA	3.7	7.0	5.2	5.6	8.8	8.0	17.0	12.7	14.4	13.7		
RUSSIA	9.8	1.3	1.3	0.0	-96.9	25.2	3.5	3.5	0.1	-97.5		
CANADA	1.0	1.1	0.8	1.3	57.5	2.1	2.8	2.1	3.9	87.0		
JAPAN	3.0	1.7	1.6	0.1	-91.7	2.3	1.3	1.3	0.1	-92.9		
CROATIA	0.2	0.9	0.6	0.3	-54.1	0.2	1.1	0.8	0.3	-54.4		
BOSNIA-HERZ.	0.2	0.4	0.3	0.3	10.4	0.5	0.7	0.5	0.5	11.2		
<b>Particle board (1000 m3)</b>												
TOTAL	166.8	146.5	111.8	93.5	-16.3	685.1	571.0	436.1	354.3	-18.8		
SWITZERLAND	62.8	65.4	50.3	43.3	-14.0	240.3	242.9	186.1	165.2	-11.3		
NORWAY	47.7	39.4	29.0	24.3	-16.1	173.8	144.9	103.9	82.7	-20.4		
UKRAINE	20.9	11.8	10.1	3.3	-67.6	124.3	62.8	54.4	16.3	-70.1		
SERBIA	3.0	5.1	3.7	2.6	-30.4	23.7	36.9	27.3	17.8	-34.9		
CROATIA	6.5	6.1	4.5	3.3	-25.8	32.2	31.3	23.2	16.0	-31.1		
TURKEY	4.1	4.2	3.2	2.8	-12.4	17.4	17.3	13.3	12.0	-9.9		
CANADA	7.5	3.8	2.4	4.6	85.8	36.9	12.9	10.0	6.8	-32.1		
<b>Fibreboard - incl. laminate flooring (1 mill. m2)</b>												
TOTAL	222.1	214.9	165.6	161.7	-2.3	65.4	71.8	55.0	39.3	-28.6		
SWITZERLAND	109.2	107.5	79.8	90.2	13.0	23.0	22.9	17.9	13.3	-25.7		
CHINA	37.3	36.5	29.4	22.9	-22.0	5.5	12.5	9.2	8.6	-6.5		
NORWAY	23.6	22.3	17.0	15.3	-9.9	4.5	4.1	3.0	2.6	-12.0		
BRAZIL	4.9	4.4	3.6	3.0	-15.5	5.1	5.5	4.3	0.9	-79.8		
SERBIA	2.3	4.8	3.9	3.2	-17.4	0.4	2.7	1.9	2.3	24.6		
UKRAINE	4.3	4.2	3.2	3.4	6.5	5.0	5.0	3.7	3.5	-3.9		
BELARUS	2.3	2.2	1.5	2.1	43.4	4.6	3.0	2.5	0.5	-80.9		
<b>Flooring - with wood face (1 mill. m2)</b>												
TOTAL	705.5	666.7	521.2	427.1	-18.1	39.6	40.9	30.7	29.1	-5.1		
CHINA	418.8	414.4	325.1	251.9	-22.5	22.4	24.4	18.3	16.9	-8.1		
UKRAINE	29.7	29.9	22.5	24.9	10.4	2.4	2.3	1.7	2.0	17.1		
CROATIA	33.6	30.9	23.0	20.5	-10.6	2.4	2.4	1.9	1.7	-9.5		
INDONESIA	47.4	42.0	33.4	26.8	-19.7	2.7	2.5	1.8	1.7	-8.7		
MALAYSIA	39.0	33.0	25.8	20.4	-20.9	1.8	1.9	1.4	1.2	-11.3		
SWITZERLAND	30.2	32.6	24.1	23.8	-1.2	1.3	1.3	1.0	0.9	-5.8		
BRAZIL	25.8	15.2	13.5	10.0	-26.4	1.5	1.6	1.2	1.4	19.4		
<b>Window frames (1000 m3)</b>												
TOTAL	34.4	31.2	23.3	19.4	-16.9	10.2	8.8	6.6	5.9	-10.6		
NORWAY	13.5	11.1	8.3	7.1	-14.4	2.1	2.1	1.4	1.9	42.2		
CHINA	4.6	3.7	3.2	1.8	-45.4	2.1	1.7	1.4	0.7	-52.0		
CROATIA	2.5	3.8	2.6	2.1	-17.1	0.7	1.0	0.7	0.5	-22.9		
PHILIPPINES	1.1	1.2	1.0	0.9	-12.5	0.8	0.9	0.7	0.6	-19.9		
USA	2.7	2.3	1.8	1.8	2.0	0.5	0.6	0.5	0.4	-6.1		
BOSNIA-HERZ.	2.1	2.2	1.3	1.3	0.7	1.3	0.6	0.4	0.3	-6.0		
MALAYSIA	0.8	0.6	0.6	0.3	-51.6	0.5	0.3	0.3	0.1	-66.3		
<b>Doors and frames (1000 m3)</b>												
TOTAL	289.1	282.6	217.2	211.0	-2.9	222.7	198.0	151.6	150.9	-0.5		
CHINA	95.2	94.9	73.1	67.8	-7.2	88.5	83.0	62.9	60.8	-3.3		
INDONESIA	67.3	73.5	58.3	57.9	-0.6	47.1	45.2	36.0	36.5	1.4		
MALAYSIA	37.5	36.2	26.9	31.9	18.5	26.9	24.1	17.7	22.2	25.5		
BRAZIL	28.5	23.3	18.4	13.4	-27.5	25.0	17.8	14.2	10.0	-29.5		
SOUTH AFRICA	13.3	7.3	5.7	4.2	-26.8	11.1	5.7	4.7	3.0	-35.1		
NORWAY	15.1	16.0	11.8	10.0	-15.3	3.6	3.5	2.7	2.1	-19.4		
VIETNAM	3.3	3.7	2.4	4.1	69.0	2.9	2.9	1.9	3.4	78.9		
<b>Glulam (1000 m3)</b>												
TOTAL	129.7	133.6	104.2	85.2	-18.2	136.9	125.2	97.1	85.5	-11.9		
MALAYSIA	27.7	33.1	26.2	15.2	-41.9	27.0	27.0	21.4	14.2	-33.6		
INDONESIA	26.1	29.7	24.0	18.1	-24.8	24.1	23.4	18.6	16.5	-11.3		
RUSSIA	13.3	13.8	10.3	9.0	-12.8	18.5	20.5	15.1	11.9	-21.1		
CHINA	22.5	19.4	15.3	13.7	-10.2	21.6	15.2	11.8	11.7	-0.7		
VIETNAM	6.2	5.2	4.4	4.6	5.0	8.1	5.9	4.9	5.5	12.1		
BOSNIA-HERZ.	3.7	3.9	2.6	4.0	49.8	4.3	4.7	3.1	5.1	65.7		
SINGAPORE	4.4	5.3	3.5	4.5	28.9	3.5	3.5	2.2	3.4	53.2		
<b>Other BJC (1000 m3)</b>												
TOTAL	172.6	144.6	112.9	89.0	-21.2	154.1	118.1	93.3	73.5	-21.3		
CHINA	31.9	32.2	24.7	21.5	-12.9	24.7	23.2	18.2	16.8	-7.4		
NORWAY	22.3	16.4	12.9	9.8	-24.2	15.3	12.5	10.0	7.6	-23.5		
BRAZIL	14.8	7.0	5.9	3.5	-41.3	22.5	10.0	8.4	4.9	-41.6		
CANADA	11.6	11.2	9.2	8.0	-13.3	11.1	9.4	7.5	7.4	-1.7		
SWITZERLAND	23.7	19.1	14.0	11.2	-19.5	10.5	9.0	6.4	6.0	-6.1		
USA	8.8	7.1	6.2	3.5	-44.3	10.9	6.9	6.1	3.5	-42.4		
BOSNIA-HERZ.	5.2	4.2	3.2	3.5	8.7	7.1	5.9	4.3	4.8	10.2		
<b>Wood furniture (1000 m3)</b>												
TOTAL	5155.8	5344.5	4084.8	3731.3	-8.7	3079.8	2895.0	2221.6	1932.8	-13.0		
CHINA	2672.8	2894.0	2208.1	1890.8	-14.4	1628.8	1568.4	1201.7	1035.4	-13.8		
VIETNAM	497.9	537.0	414.2	388.8	-6.1	294.6	298.9	233.7	216.9	-7.2		
INDONESIA	337.7	340.6	275.7	218.4	-20.8	184.0	181.5	145.4	115.6	-20.5		
MALAYSIA	224.9	229.2	179.3	129.9	-27.5	171.2	158.3	123.4	96.2	-22.1		
TURKEY	167.8	162.3	117.7	105.1	-10.7	95.8	88.5	64.0	56.1	-12.3		
BRAZIL	129.3	116.0	86.7	78.9	-9.0	100.9	86.3	64.7	60.0	-7.3		
INDIA	119.9	126.3	94.9	87.8	-7.4	72.3	70.6	52.9	49.0	-7.3		