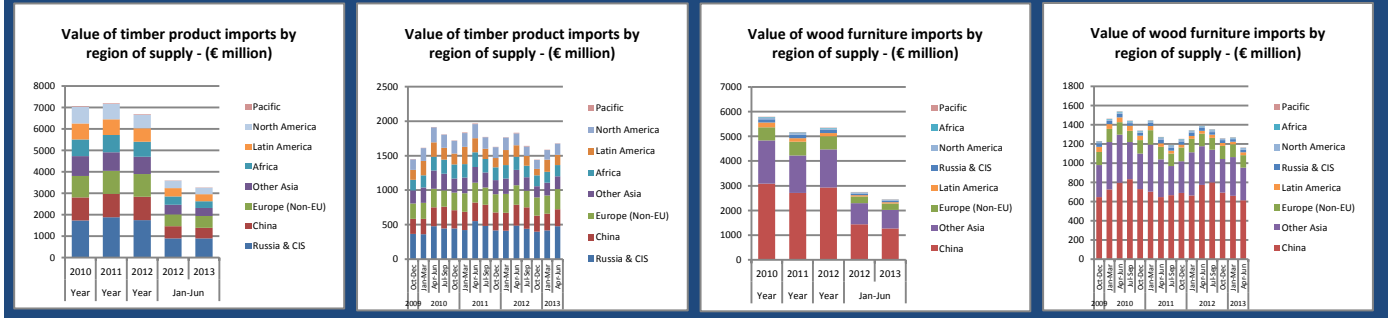


## EU-27 (trade with non-EU countries)



Supply region/country	Value (€ million)					Quantity (see unit)					Quarterly trend
	2011	2012	2012	2013	% chge	2011	2012	2012	2013	% chge	
<b>Softwood logs (1000 m3)</b>											
<b>TOTAL</b>	<b>322.4</b>	<b>335.3</b>	<b>181.0</b>	<b>196.6</b>	<b>8.6</b>	<b>5029.7</b>	<b>5249.3</b>	<b>2719.4</b>	<b>3335.7</b>	<b>22.7</b>	
NORWAY	72.6	118.7	60.1	77.0	28.1	1048.1	1881.1	928.4	1303.0	40.4	
UKRAINE	58.7	67.0	32.6	35.7	9.7	963.0	1062.5	511.0	549.3	7.5	
RUSSIA	76.5	62.0	42.5	40.7	-4.3	1132.1	826.9	548.0	654.0	19.3	
BELARUS	44.9	26.9	13.5	15.3	13.4	1064.5	724.7	336.4	478.8	42.3	
SWITZERLAND	63.0	55.1	29.5	25.3	-14.4	738.1	684.4	363.2	316.2	-12.9	
BOSNIA-HERZ.	3.4	2.2	1.2	1.0	-10.2	47.0	28.2	14.9	12.9	-13.5	
CROATIA	0.9	1.6	0.9	0.8	-11.4	14.8	24.9	12.8	15.6	22.2	
<b>Tropical hardwood logs (1000 m3)</b>											
<b>TOTAL</b>	<b>120.1</b>	<b>87.2</b>	<b>47.1</b>	<b>40.6</b>	<b>-13.7</b>	<b>293.3</b>	<b>206.2</b>	<b>113.7</b>	<b>90.6</b>	<b>-20.3</b>	
CONGO (DEM. REP.)	30.7	22.2	12.0	10.6	-11.7	77.5	56.7	30.1	27.4	-9.0	
CONGO	27.6	21.8	11.2	9.8	-12.4	65.4	50.8	26.4	22.7	-13.9	
CAMEROON	25.8	15.0	9.1	6.0	-34.2	68.5	39.5	23.9	15.8	-33.8	
LIBERIA	5.4	5.3	3.2	1.3	-59.5	23.1	20.5	13.2	5.4	-59.2	
CEN. AFR. REP.	8.9	7.6	4.0	2.8	-28.6	21.9	17.7	9.6	7.0	-26.9	
GABON	3.9	3.0	1.3	1.3	2.9	8.7	6.2	2.7	2.8	4.1	
EQUAT. GUINEA	4.6	1.3	0.6	0.5	-15.7	14.0	4.0	1.7	2.6	50.2	
<b>Other hardwood logs (1000 m3)</b>											
<b>TOTAL</b>	<b>409.5</b>	<b>369.9</b>	<b>187.0</b>	<b>210.2</b>	<b>12.4</b>	<b>6050.0</b>	<b>6267.7</b>	<b>2879.7</b>	<b>3406.0</b>	<b>18.3</b>	
RUSSIA	162.8	178.6	72.6	110.8	52.6	2880.6	3386.3	1317.3	2166.5	64.5	
BELARUS	49.9	40.3	21.7	17.6	-19.1	1413.2	1561.5	846.6	611.9	-27.7	
CROATIA	48.2	37.2	20.7	22.1	6.9	598.1	466.6	242.0	219.6	-9.3	
UKRAINE	34.1	25.2	13.9	11.8	-15.4	597.5	426.1	222.9	194.4	-12.8	
SWITZERLAND	20.7	14.4	9.5	8.3	-12.3	226.1	157.3	95.4	79.9	-16.2	
BOSNIA-HERZ.	8.3	7.1	4.3	1.3	-69.1	112.8	101.0	61.9	15.4	-75.1	
USA	55.2	45.8	32.9	24.8	-24.8	104.7	80.8	58.2	48.9	-16.0	
<b>Softwood sawn (1000 m3)</b>											
<b>TOTAL</b>	<b>1056.8</b>	<b>970.9</b>	<b>517.1</b>	<b>463.9</b>	<b>-10.3</b>	<b>5096.5</b>	<b>4701.9</b>	<b>2485.7</b>	<b>2292.3</b>	<b>-7.8</b>	
RUSSIA	598.9	547.1	289.2	253.4	-12.4	2876.5	2606.7	1365.0	1245.8	-8.7	
UKRAINE	78.7	70.3	34.9	37.1	6.2	656.2	576.7	288.5	297.0	2.9	
BELARUS	61.1	65.2	35.4	35.2	-0.5	472.4	518.5	289.7	272.2	-6.0	
NORWAY	84.7	87.0	49.4	50.2	1.6	403.6	417.2	238.0	233.7	-1.8	
CANADA	117.2	103.6	56.7	47.4	-16.5	241.7	197.3	110.1	78.2	-28.9	
SWITZERLAND	32.3	29.7	14.6	14.6	-0.2	172.3	157.6	77.6	77.9	0.4	
USA	30.2	22.3	13.8	10.0	-28.0	72.6	52.8	32.5	24.2	-25.6	
<b>Tropical hardwood sawn (1000 m3)</b>											
<b>TOTAL</b>	<b>772.0</b>	<b>696.5</b>	<b>383.0</b>	<b>306.3</b>	<b>-20.0</b>	<b>1119.7</b>	<b>971.3</b>	<b>539.7</b>	<b>449.8</b>	<b>-16.6</b>	
CAMEROON	223.8	223.2	122.7	94.5	-23.0	367.5	357.6	197.4	157.1	-20.4	
MALAYSIA	183.2	152.0	82.3	64.8	-21.2	233.4	171.6	94.9	82.1	-13.5	
BRAZIL	109.7	84.9	56.8	31.4	-44.7	153.2	114.3	74.7	48.1	-35.5	
GABON	43.9	44.3	23.3	23.1	-0.9	80.3	83.7	44.3	43.7	-1.3	
IVORY COAST	52.3	47.9	27.4	18.9	-30.9	83.1	80.7	46.0	33.4	-27.4	
GHANA	24.1	17.3	8.7	8.9	1.8	40.7	33.6	17.1	16.5	-3.1	
CONGO	18.5	16.8	7.6	13.3	74.9	28.0	26.0	12.0	20.0	65.9	
<b>Other hardwood sawn (1000 m3)</b>											
<b>TOTAL</b>	<b>654.7</b>	<b>593.7</b>	<b>312.6</b>	<b>296.5</b>	<b>-5.1</b>	<b>1482.6</b>	<b>1319.5</b>	<b>704.9</b>	<b>659.1</b>	<b>-6.5</b>	
USA	292.9	254.5	133.3	126.3	-5.2	469.0	378.3	198.8	195.8	-1.5	
CROATIA	119.0	109.2	61.3	62.9	2.6	338.7	305.4	173.4	174.8	0.8	
UKRAINE	74.4	70.8	36.6	32.3	-11.7	269.8	237.4	126.7	106.9	-15.6	
BOSNIA-HERZ.	31.1	30.5	15.1	13.8	-8.7	77.7	75.8	38.9	33.3	-14.5	
BELARUS	8.1	9.5	4.9	4.1	-17.0	58.7	75.7	39.7	31.3	-21.3	
SERBIA	21.9	22.5	11.7	11.7	0.0	66.2	69.6	35.2	34.1	-3.1	
RUSSIA	13.2	8.6	5.2	3.6	-31.5	60.5	42.9	25.8	18.6	-27.9	

## EU-27 (trade with non-EU countries)

Supply region/country	Value (€ million)					Quantity (see unit)					Quarterly trend	
	Year		Jan-Sep			Year		Jan-Sep				
	2010	2011	2011	2012	% change	2010	2011	2011	2012	% change		
<b>Softwood mouldings (1000 m3)</b>												
TOTAL	40.5	31.9	18.4	15.9	-13.6	65.4	52.6	30.4	27.6	-9.2		
RUSSIA	7.5	7.5	4.5	4.1	-8.2	19.0	18.9	11.4	10.2	-11.2		
BELARUS	3.7	2.6	1.5	1.4	-7.8	12.6	10.0	5.7	5.5	-4.6		
CANADA	9.1	6.3	3.9	3.3	-14.6	7.2	5.2	3.4	3.2	-6.0		
UKRAINE	2.2	2.0	1.0	0.1	-85.6	4.2	3.7	2.0	0.2	-89.1		
CHINA	5.6	3.1	1.8	1.3	-23.8	5.6	2.7	1.4	1.1	-22.2		
NEW ZEALAND	2.3	1.8	1.4	0.7	-48.5	3.0	2.1	1.4	0.8	-42.1		
BRAZIL	2.5	1.3	0.8	1.5	98.8	3.6	1.9	1.1	2.3	114.7		
<b>Hardwood mouldings (1000 m3)</b>												
TOTAL	351.7	322.6	203.0	142.5	-29.8	361.4	290.0	185.4	136.9	-26.2		
BRAZIL	110.1	86.6	63.3	34.0	-46.3	124.7	91.0	65.5	38.9	-40.5		
INDONESIA	112.2	93.2	64.8	40.0	-38.3	110.4	78.2	55.3	39.8	-28.0		
CHINA	39.8	51.1	25.6	22.6	-11.5	34.8	38.4	19.1	18.4	-3.6		
MALAYSIA	26.0	20.7	11.9	8.5	-28.5	23.9	16.3	9.6	6.3	-34.8		
BOLIVIA	6.8	6.9	4.2	3.4	-18.8	8.8	7.3	4.8	3.7	-23.4		
IVORY COAST	2.5	3.9	1.6	2.6	64.5	3.2	5.2	2.2	3.5	61.1		
CAMEROON	2.8	3.6	1.9	1.0	-48.1	3.4	5.1	2.7	1.3	-51.5		
<b>Softwood veneer (1000 m3)</b>												
TOTAL	24.8	21.5	12.0	8.3	-30.6	24.5	15.0	7.8	6.1	-21.4		
INDONESIA	10.6	8.5	4.9	3.7	-24.0	6.2	4.4	2.7	2.1	-21.9		
CHILE	1.1	1.6	0.8	0.8	6.5	5.4	3.2	1.5	1.6	7.1		
CHINA	5.0	5.2	2.8	1.1	-60.5	3.2	2.6	1.3	0.5	-60.8		
BRAZIL	1.1	0.5	0.2	0.3	24.0	3.2	1.0	0.4	0.5	29.4		
USA	2.5	1.7	1.3	0.7	-44.2	1.5	1.0	0.7	0.4	-43.8		
RUSSIA	0.7	0.7	0.4	0.4	10.4	1.3	0.5	0.2	0.3	4.1		
MALAYSIA	0.5	0.2	0.0	0.0	na	1.0	0.5	0.0	0.0	na		
<b>Tropical hardwood veneer (1000 m3)</b>												
TOTAL	175.1	153.9	87.7	70.2	-20.0	302.5	257.5	150.2	120.2	-20.0		
GABON	80.2	61.7	37.6	28.4	-24.6	169.3	127.9	79.0	60.3	-23.6		
IVORY COAST	31.2	32.5	17.5	14.2	-18.6	60.2	61.9	32.9	27.9	-15.3		
CAMEROON	27.0	22.3	12.4	10.2	-17.6	30.8	26.1	15.0	13.3	-11.3		
EQUAT.GUINEA	7.8	9.8	4.1	5.0	24.0	14.6	15.6	7.5	6.7	-10.6		
CONGO	7.6	6.6	3.8	3.4	-10.4	13.8	11.8	6.6	6.3	-5.1		
GHANA	6.3	7.5	4.9	2.1	-56.4	6.1	7.7	5.6	2.1	-62.0		
USA	1.4	1.8	1.2	0.6	-49.3	0.8	1.0	0.7	0.3	-52.9		
<b>Other hardwood veneer (1000 m3)</b>												
TOTAL	234.1	209.9	111.0	105.4	-5.1	198.0	180.2	94.7	89.1	-5.8		
UKRAINE	49.9	55.3	27.7	30.6	10.4	38.6	40.5	21.3	21.4	0.9		
USA	80.9	69.0	39.4	34.4	-12.7	48.2	39.7	22.7	20.8	-8.6		
RUSSIA	7.7	9.4	4.7	4.6	-1.1	25.2	29.7	14.5	14.4	-0.9		
SERBIA	4.4	4.4	1.9	1.9	1.6	22.2	21.4	9.9	9.2	-7.5		
CROATIA	24.5	23.4	12.2	12.7	3.8	14.3	13.9	7.3	8.1	12.0		
TURKEY	7.9	9.3	5.3	4.1	-21.3	6.3	6.8	3.7	3.3	-8.9		
BOSNIA-HERZ.	4.9	4.6	2.2	2.0	-9.2	7.3	6.4	3.1	2.6	-17.0		
<b>Softwood plywood (1000 m3)</b>												
TOTAL	382.2	360.0	225.8	228.9	1.4	1354.6	1192.4	773.1	770.1	-0.4		
BRAZIL	184.0	199.5	134.2	150.3	12.0	722.9	733.4	502.2	552.9	10.1		
CHILE	96.6	62.0	32.6	24.7	-24.0	316.1	185.7	101.6	69.1	-32.0		
CHINA	48.1	42.5	25.1	23.7	-5.3	177.6	133.8	81.2	77.0	-5.2		
RUSSIA	26.3	31.7	21.7	16.6	-23.5	75.4	92.5	64.1	43.5	-32.2		
USA	3.0	3.8	2.1	1.7	-16.2	7.6	9.3	5.2	4.2	-19.0		
MALAYSIA	4.4	4.0	2.2	2.5	11.7	11.8	8.4	4.8	5.9	23.3		
BOSNIA-HERZ.	5.1	4.4	2.3	2.2	-2.1	7.2	6.3	3.2	3.2	-0.2		
<b>Tropical hardwood plywood (1000 m3)</b>												
TOTAL	162.1	150.8	79.7	72.8	-8.7	351.3	289.4	154.4	144.1	-6.7		
CHINA	40.1	32.0	15.0	17.1	14.5	128.5	89.2	45.0	47.9	6.3		
INDONESIA	47.5	44.0	24.5	24.1	-1.6	89.1	72.1	40.3	41.1	1.9		
MALAYSIA	21.2	22.0	10.0	9.7	-2.7	48.1	44.0	20.3	21.4	5.2		
GABON	28.4	27.7	16.4	13.7	-16.4	39.9	40.1	23.7	20.0	-15.6		
MOROCCO	11.7	13.0	7.0	3.8	-45.3	14.9	17.0	9.4	4.4	-52.7		
URUGUAY	1.5	2.1	1.8	0.2	-89.3	6.0	7.5	6.1	0.7	-88.4		
IVORY COAST	2.9	2.3	1.3	0.7	-47.4	6.3	4.5	2.4	1.4	-40.5		
<b>Other hardwood plywood (1000 m3)</b>												
TOTAL	732.3	721.9	373.4	361.2	-3.3	2031.2	1872.3	985.0	930.4	-5.5		
CHINA	261.9	290.0	148.6	135.9	-8.5	926.4	888.8	474.1	418.0	-11.8		
RUSSIA	322.0	290.7	151.3	160.0	5.8	730.9	650.2	335.7	354.9	5.7		
UKRAINE	32.9	35.4	17.1	18.2	6.5	76.5	84.6	40.6	43.2	6.6		
MALAYSIA	34.6	37.6	21.3	16.5	-22.4	89.1	80.7	47.2	39.0	-17.3		
BELARUS	21.9	19.0	9.9	9.5	-4.2	67.3	58.2	30.3	29.0	-4.3		
URUGUAY	12.7	15.3	7.3	6.4	-12.4	54.6	57.7	29.6	23.9	-19.3		
INDONESIA	13.4	10.2	6.1	4.0	-34.0	22.1	14.6	9.1	5.9	-34.9		

## EU-27 (trade with non-EU countries)

Supply region/country	Value (€ million)					Quantity (see unit)					Quarterly trend
	Year		Jan-Sep			Year		Jan-Sep			
	2010	2011	2011	2012	% change	2010	2011	2011	2012	% change	
<b>Densified wood (1000 m3)</b>											
<b>TOTAL</b>	<b>30.1</b>	<b>26.7</b>	<b>17.7</b>	<b>11.6</b>	<b>-34.6</b>	<b>58.2</b>	<b>44.5</b>	<b>29.5</b>	<b>21.5</b>	<b>-27.0</b>	
CHINA	11.1	13.5	9.5	6.0	-36.4	18.4	17.0	12.0	8.5	-28.6	
USA	3.7	7.0	4.1	3.5	-15.2	8.0	17.0	10.3	9.0	-12.9	
RUSSIA	9.8	1.3	1.3	0.0	-100.0	25.2	3.5	3.4	0.0	-100.0	
CANADA	1.0	1.1	0.7	0.7	5.4	2.1	2.8	1.7	2.1	20.0	
JAPAN	3.0	1.7	1.3	0.1	-89.8	2.3	1.3	1.0	0.1	-91.0	
CROATIA	0.2	0.9	0.3	0.3	-7.3	0.2	1.1	0.4	0.3	-3.7	
BOSNIA-HERZ.	0.2	0.4	0.2	0.2	13.6	0.5	0.7	0.3	0.4	19.0	
<b>Particle board (1000 m3)</b>											
<b>TOTAL</b>	<b>166.8</b>	<b>146.5</b>	<b>74.4</b>	<b>64.7</b>	<b>-13.0</b>	<b>685.1</b>	<b>571.0</b>	<b>287.5</b>	<b>240.9</b>	<b>-16.2</b>	
SWITZERLAND	62.8	65.4	33.4	29.1	-12.9	240.3	242.9	123.3	111.6	-9.5	
NORWAY	47.7	39.4	20.0	18.2	-9.0	173.8	144.9	70.9	60.8	-14.2	
UKRAINE	20.9	11.8	5.5	2.3	-58.9	124.3	62.8	28.9	11.2	-61.0	
SERBIA	3.0	5.1	2.5	1.8	-27.3	23.7	36.9	18.3	12.5	-31.8	
CROATIA	6.5	6.1	3.0	3.0	-2.1	32.2	31.3	16.0	14.4	-10.0	
TURKEY	4.1	4.2	2.2	1.8	-18.4	17.4	17.3	9.2	7.3	-19.8	
CANADA	7.5	3.8	2.0	3.1	58.2	36.9	12.9	8.4	4.6	-44.9	
<b>Fibreboard - incl. laminate flooring (1 mill. m2)</b>											
<b>TOTAL</b>	<b>222.1</b>	<b>214.9</b>	<b>112.9</b>	<b>104.3</b>	<b>-7.6</b>	<b>64.4</b>	<b>33.1</b>	<b>18.0</b>	<b>15.5</b>	<b>-14.0</b>	
SWITZERLAND	109.2	107.5	53.5	58.8	10.0	21.6	12.6	6.4	6.7	4.9	
CHINA	37.3	36.5	19.2	13.3	-30.8	9.5	5.3	2.8	1.8	-36.8	
NORWAY	23.6	22.3	12.1	10.2	-15.9	4.1	2.2	1.2	0.9	-21.4	
BRAZIL	4.9	4.4	2.5	2.2	-12.9	4.7	1.8	1.1	0.9	-12.5	
SERBIA	2.3	4.8	3.0	2.4	-20.2	1.9	1.8	1.1	0.8	-24.0	
UKRAINE	4.3	4.2	2.1	2.3	6.7	4.9	1.7	0.8	0.9	13.6	
BELARUS	2.3	2.2	1.0	1.6	68.5	3.0	1.3	0.5	1.0	95.0	
<b>Flooring - with wood face (1 mill. m2)</b>											
<b>TOTAL</b>	<b>705.5</b>	<b>666.7</b>	<b>343.5</b>	<b>290.3</b>	<b>-15.5</b>	<b>39.6</b>	<b>34.8</b>	<b>18.0</b>	<b>15.3</b>	<b>-15.0</b>	
CHINA	418.8	414.4	208.9	168.6	-19.3	23.1	21.0	10.7	8.8	-17.8	
UKRAINE	29.7	29.9	15.4	15.8	2.0	2.4	2.4	1.2	1.2	-2.9	
CROATIA	33.6	30.9	15.5	18.7	20.6	2.3	2.1	1.1	1.2	10.0	
INDONESIA	47.4	42.0	23.2	18.5	-20.2	2.5	1.9	1.1	0.9	-18.0	
MALAYSIA	39.0	33.0	17.6	14.1	-19.8	1.8	1.5	0.8	0.6	-20.2	
SWITZERLAND	30.2	32.6	15.7	15.2	-3.3	1.3	1.4	0.6	0.6	-1.5	
BRAZIL	25.8	15.2	10.5	6.8	-34.9	1.6	0.8	0.5	0.3	-36.0	
<b>Window frames (1000 m3)</b>											
<b>TOTAL</b>	<b>34.4</b>	<b>31.2</b>	<b>16.1</b>	<b>13.5</b>	<b>-16.7</b>	<b>10.2</b>	<b>8.8</b>	<b>4.5</b>	<b>4.1</b>	<b>-8.3</b>	
NORWAY	13.5	11.1	6.2	5.3	-14.6	2.1	2.1	1.0	1.4	40.0	
CHINA	4.6	3.7	2.0	1.3	-36.2	2.1	1.7	0.9	0.5	-42.0	
CROATIA	2.5	3.8	1.7	1.6	-3.5	0.7	1.0	0.5	0.4	-6.2	
PHILIPPINES	1.1	1.2	0.7	0.5	-21.8	0.8	0.9	0.5	0.4	-24.2	
USA	2.7	2.3	1.2	1.2	-2.6	0.5	0.6	0.3	0.3	-22.0	
BOSNIA-HERZ.	2.1	2.2	0.8	0.9	8.2	1.3	0.6	0.2	0.2	-32.0	
MALAYSIA	0.8	0.6	0.4	0.2	-50.1	0.5	0.3	0.2	0.1	-70.1	
<b>Doors and frames (1000 m3)</b>											
<b>TOTAL</b>	<b>289.1</b>	<b>282.6</b>	<b>139.1</b>	<b>139.1</b>	<b>0.0</b>	<b>222.7</b>	<b>198.0</b>	<b>98.2</b>	<b>97.1</b>	<b>-1.1</b>	
CHINA	95.2	94.9	44.8	42.3	-5.6	88.5	83.0	38.8	36.8	-5.0	
INDONESIA	67.3	73.5	37.9	39.0	3.1	47.1	45.2	24.4	24.5	0.4	
MALAYSIA	37.5	36.2	16.5	22.6	36.8	26.9	24.1	11.0	15.7	42.3	
BRAZIL	28.5	23.3	12.5	9.2	-26.5	25.0	17.8	10.0	6.8	-31.6	
SOUTH AFRICA	13.3	7.3	4.0	3.2	-21.0	11.1	5.7	3.4	2.3	-32.5	
NORWAY	15.1	16.0	8.3	7.0	-15.9	3.6	3.5	1.9	1.5	-21.8	
VIETNAM	3.3	3.7	1.5	2.2	49.1	2.9	2.9	1.2	1.9	57.2	
<b>Glulam (1000 m3)</b>											
<b>TOTAL</b>	<b>129.7</b>	<b>133.6</b>	<b>71.1</b>	<b>57.1</b>	<b>-19.8</b>	<b>136.9</b>	<b>125.2</b>	<b>67.7</b>	<b>57.3</b>	<b>-15.3</b>	
MALAYSIA	27.7	33.1	18.2	10.3	-43.2	27.0	27.0	15.2	9.4	-37.9	
INDONESIA	26.1	29.7	16.9	12.0	-28.7	24.1	23.4	13.4	11.0	-18.2	
RUSSIA	13.3	13.8	7.5	6.4	-14.6	18.5	20.5	10.8	8.6	-20.2	
CHINA	22.5	19.4	9.7	9.1	-5.3	21.6	15.2	7.8	8.0	3.0	
VIETNAM	6.2	5.2	2.5	2.8	11.9	8.1	5.9	2.8	3.3	16.0	
BOSNIA-HERZ.	3.7	3.9	2.0	2.7	36.3	4.3	4.7	2.3	3.5	51.0	
SINGAPORE	4.4	5.3	1.9	3.4	83.4	3.5	3.5	1.2	2.6	119.9	
<b>Other BJC (1000 m3)</b>											
<b>TOTAL</b>	<b>172.6</b>	<b>144.6</b>	<b>78.3</b>	<b>62.8</b>	<b>-19.8</b>	<b>154.1</b>	<b>118.1</b>	<b>65.9</b>	<b>51.1</b>	<b>-22.4</b>	
CHINA	31.9	32.2	16.3	14.3	-12.1	24.7	23.2	12.4	10.9	-12.3	
NORWAY	22.3	16.4	9.3	7.4	-20.8	15.3	12.5	6.8	5.9	-13.1	
BRAZIL	14.8	7.0	4.4	2.4	-46.5	22.5	10.0	6.2	3.3	-46.9	
CANADA	11.6	11.2	7.0	5.4	-23.5	11.1	9.4	5.8	5.0	-13.8	
SWITZERLAND	23.7	19.1	9.4	8.1	-12.9	10.5	9.0	4.3	4.1	-4.5	
USA	8.8	7.1	4.5	2.8	-38.2	10.9	6.9	4.2	2.9	-32.0	
BOSNIA-HERZ.	5.2	4.2	2.3	2.3	1.0	7.1	5.9	3.2	3.1	-2.0	
<b>Wood furniture (1000 m3)</b>											
<b>TOTAL</b>	<b>5155.8</b>	<b>5344.5</b>	<b>2734.2</b>	<b>2428.4</b>	<b>-11.2</b>	<b>3079.8</b>	<b>2895.0</b>	<b>1503.7</b>	<b>1305.7</b>	<b>-13.2</b>	
CHINA	2672.8	2894.0	1418.1	1255.1	-11.5	1628.8	1568.4	787.4	677.6	-13.9	
VIETNAM	497.9	537.0	313.3	299.4	-4.4	294.6	298.9	178.9	166.1	-7.1	
INDONESIA	337.7	340.6	194.0	157.8	-18.7	184.0	181.5	102.7	92.7	-9.8	
MALAYSIA	224.9	229.2	127.2	92.2	-27.5	171.2	158.3	87.5	68.1	-22.1	
TURKEY	167.8	162.3	80.5	72.3	-10.2	95.8	88.5	44.3	38.5	-13.1	
BRAZIL	129.3	116.0	57.4	53.7	-6.3	100.9	86.3	43.4	40.5	-6.6	
INDIA	119.9	126.3	61.3	59.1	-3.5	72.3	70.6	34.4	33.1	-3.8	